

GENERAL ELEVATOR

GENERAL ELEVATOR IS POPULAR IN THE WORLD

We are good at high-tech and knowing what you need.

We pursue time and comfortable travel at any time.

We pledge safety and a peaceful world.

Our high tech brings about smooth global transport. Our fine services are used by the public.

GENERAL Elevator is proud of proficient skill and good reputation.

High-tech of GENERAL Elevator serves vast human beings.

GENERAL is popular in the world because of hardworking attitude instead of ambition.



扫描二维码播放
通用电梯企业形象片

Scanning the two-dimension code
to play the enterprise-image publicity
video for GENERAL Elevator



Philippines Exclusive Strategic Partner
and Service Provider:

adm Vertical
Specialist, Inc.



Escalator

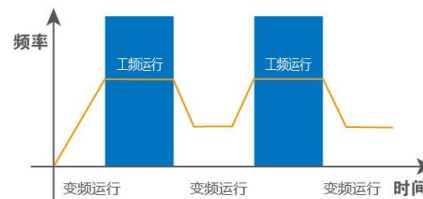
The leading Technology make the product safer, more comfortable and energy-efficient.

The GENERAL escalator series products combines the unqiues modern technology with the humanistic needs, with its excellent performance and flexible design to meet the nedds from various customers. The prior applications of the new materials and advance manufacturing technologies provide the general escalator with more perfection, safety, ease and energy-efficient.



The advance technical support

The perfect combination between variable frequency technology and high precision bevel gear deceleration driving device, obvious energy-saving effect, more perfect performance and more comfortable operation.



Safe to carry

The metal truss structure with high precision, compact and secure, is safer fro carrying.



Matching different styles of architecture

The handrail and skirt plate of multiple materials and colors perfectly match different styles of architerture and meet the different aesthetic need.



Philippines Exclusive Strategic Partner
and Service Provider:

adm Vertical
Specialist, Inc.

Heavy load and public transportation oriented automatic escalator-Excellent Carrying Capacity, exclusively tailored for public transport.

The GENERAL heavy load and public transportation oriented escalator design for public transport, it produces the top manufacturing equipment and processes and makes full use of new materials. With the superior operation performance, strong carrying capacity as well as the leading security. This escalator can meet such requirement asenormous flow of people and long transit time and provide the optimal solutions for public transportation such as subway stations, airports, etc.



The advance control

The advance control system brings the stronger expandability, higher stability, more detailed failure detection and higher security.



Stronger carrying capacity

The application of the turbine helical gear technology ensures higher transmission efficiency, lower consumption and more powerful driving force of the whole set.



The enhance safety

Unilateral positioning high precise U-shaped guide rails together with guard plates of high quality thoroughly demonstrates the safety philosophy.



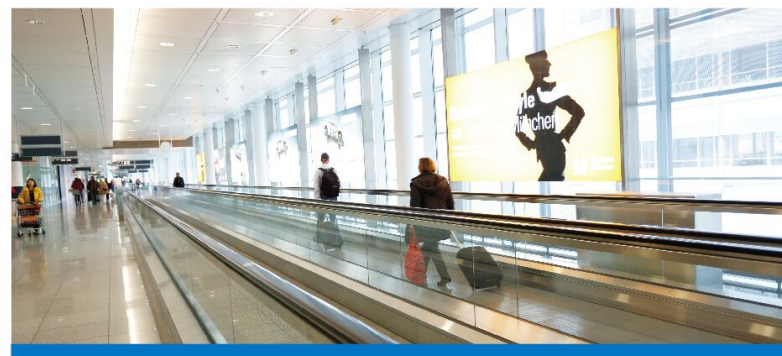
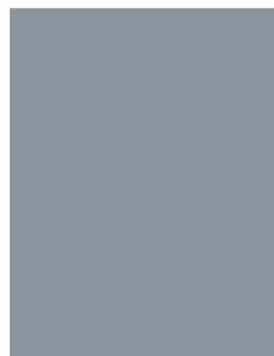
Philippines Exclusive Strategic Partner
and Service Provider:

adm Vertical
Specialist, Inc.



Moving Walk

The Perfect integration of technology and art offers smooth carrying for the city.



The GENERAL moving walk series products introduce the advanced pavement manufacturing technology to make an accurate analysis of urban traffic flow, building layout and passenger demand. This series product combines practical features with visual decorative effect, perfectly integrating the technology and art together, which makes urban delivery more smoothly.



Efficient delivery

The safe track technology takes advantage of scientific mechanical operation to secure the stability and efficiency of elevator position.

The advance handrail drive organically combines two types of drive-friction wheel drive and roller drive-together to improve force.



Safety design

The anti-skid slot design on the pavement pedal surface enables the passengers to experience more security and ease.

The pavement safety protection device is monitored by the advance safety circuit board to eliminate operation risks in time, reduce the maintenance time and ensure the safety of passengers.



Philippines Exclusive Strategic Partner
and Service Provider:

adm Vertical
Specialist, Inc.

Parts Configuration



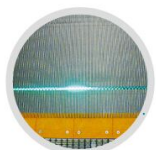
1. Step-Chain Breaking Protector

When the drive-chain has been over-stretched or it is broken, the escalator (moving walk) will be automatically stopped for running.



2. Emergency stop button

When the button has been pressed down the escalator (moving walk) will be stopped for running.



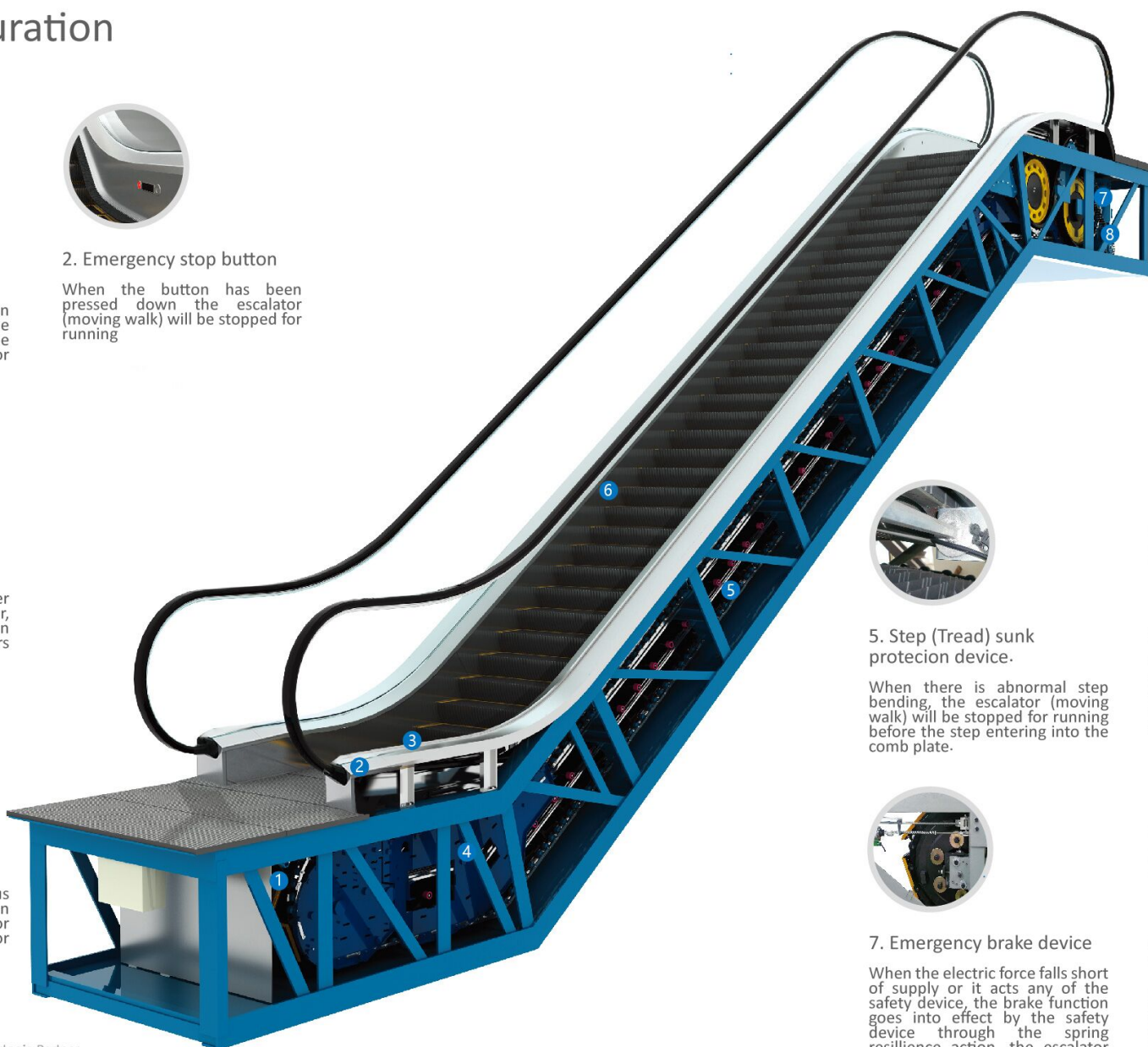
3. Step illumination

Illumination exists in the upper and lower ends of the escalator, in the lower part of the step in order to remind the passengers of the security matters.



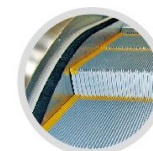
4. Step speed detector

When the handrail speed versus step is slower than the certain percentage, the escalator (moving walk) will be stopped for running.



5. Step (Tread) sunk protection device.

When there is abnormal step bending, the escalator (moving walk) will be stopped for running before the step entering into the comb plate.



6. Skirt panel brush

The brush that has been installed between the skirt panel and the step will prevent the shoes of passengers from touching the skirt panel.



7. Emergency brake device

When the electric force falls short of supply or it acts any of the safety device, the brake function goes into effect by the safety device through the spring resiliency action, the escalator (moving walk) will be stopped for running accordingly.



8. Drive-chain breaking protection

When the drive-chain has been given over-stretched or it is broken, the escalator (moving walk) will automatically stop for running.



Philippines Exclusive Strategic Partner and Service Provider:

adm Vertical Specialist, Inc.

Decorative parts configuration

Handrail Color



黑色
Black



黑色带点白
Black with a little white



红色
Red



蓝色
Blue



绿色
Green



褐色
Bronze



浅褐色
Light brown



灰色
Gray

Baseboard Color



无色透明(标配)
Colorless transparent
(standard)



灰色
Gray



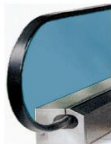
古铜色
Bronze



黄色
Yellow



红色
Red



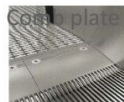
蓝色
Blue



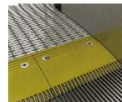
银色铝
Silver aluminum



黑色不锈钢
Black stainless steel



铝梳齿板
Aluminum comb plate



黄色塑料
Yellow plastic

Function Table

Standard Function

1. 缺相、错相保护 Lack of phase, error phase protection	如查发生缺相或错相, 自动扶梯(自动人行道)将自动停止。 If lack of phase or error phase has been checked out, the escalator (moving walk) will automatically stop the operation.
2. 马达超载保护 Motor over-load protection	电流超过额定电流的15%则扶梯自动停止运行。 When the current exceeds 15% of the current rating, the escalator will automatically stop the operation.
3. 电路回路保护 Electrical appliance loop protection	提供自动电路断开装置以保护自动扶梯(自动人行道)的电路和电源部件。 It offers the automatic circuit disconnecting device to protect the circuit and mains components of the escalator (moving walk).
4. 扶手带入口保护 Handrail inlet protection	当外物被夹在扶手带入口处时, 自动扶梯(自动人行道)会自动停止运行。 When some foreign substance has been clipped in the handrail inlet, the escalator (moving walk) will automatically stop the operation.
5. 梳齿板安全保护装置 Comb plate safety device	当外物被夹入梳齿时, 自动扶梯(自动人行道)将自动停止运行。 When some foreign substance has been clipped in or between the combs, the escalator (moving walk) will automatically stop the operation.
6. 梯级塌陷保护装置 Step sagging protection device	当发现梯级有异常的弯曲时, 自动扶梯(自动人行道)会在梯级进入梳齿板前停止运行。 When there is abnormal step bending, the escalator (moving walk) will stop the operation before the step entering into the comb plate.
7. 驱动链断裂保护 Broken drive-chain safety device	当驱动链被过度拉伸或断裂时, 自动扶梯(自动人行道)将自动停止运行。 When the drive-chain has been over-stretched or it is broken, the escalator (moving walk) will automatically stop the operation.
8. 梯级链断裂保护 Broken step chain protection	当梯级(板)链被过度拉伸或断裂时, 自动扶梯(自动人行道)将自动停止运行。 When the step (plate) chain has been over-stretched or it is broken, the escalator (moving walk) will automatically stop the operation.
9. 超速保护 Over-speed protection	当自动扶梯(自动人行道)超速, 将自动停止运行。 When there is over-speed to the escalator (moving walk), it will automatically stop the operation.
10. 非操作逆转保护 Direction reversal protection	当逆转操作而违反了规定的运行方向, 自动扶梯(自动人行道)将自动停止运行。 When it comes the unintentional reversal of the direction of travel, the escalator (moving walk) will automatically stop the operation.
11. 警戒线 Security line	黄色合成树脂警戒线位于自动扶梯踏板的前部和两边, 以防止乘客踏入相邻梯级的边缘及梯级和围裙板之间, 在梯级两边的警戒线高于踏板表面(自动人行道提供可选黄色喷漆警戒线)。 The yellow synthetic resin security line is located in the front position and two sides of the escalator tread so that the passengers will not tread in-between the edge of the adjacent step and the left group lengthened skirt panel. The security line on both sides of the step is higher than the tread surface. (The moving walk offers the selective yellow spray-painted security line.)
12. 紧急停止按钮 Emergency stop button	当按下该按钮时, 自动扶梯(自动人行道)将停止运行。 When the button has been pressed down, the escalator (moving walk) will stop the operation.
13. 围裙板保护 Skirt panel protection	当外物被夹在围裙板和梯级之间时, 自动扶梯(自动人行道)将自动停止运行。 When some foreign substance has been clipped in the skirt panel and the step, the escalator (moving walk) will automatically stop the operation.
14. 制动器保护 Brake protection	当电力不足或任一安全装置动作时, 制动装置将通过弹簧弹力作用使制动功能生效, 使自动扶梯(自动人行道)停止运行。 When the electric force falls short of supply or it acts any of the safety device, the brake function goes into effect by the safety device through the spring resilience action. In this way, the escalator (moving walk) stops the operation.
15. 检修安全开关 Safety inspection switch	检修保养时, 防止扶梯启动的安全装置。 It is a safety device to prevent from the escalator starting during the inspection and maintenance.
16. 梯级照明 Step illumination	扶梯上下端, 梯级下部装有照明以提醒乘客注意安全。 Illumination exists in the upper and lower ends of the escalator, in the lower part of the step in order to remind the passengers of the security matters.
17. 启动警铃装置 Alarm bell starting device	扶梯启动时警铃响起, 以提醒乘客安全。 The alarm bell rings when it starts the escalator in order to remind the passengers of the security matters.
18. 扶手带断裂保护装置 Control device for handrail breakage	当扶手带断裂时, 自动扶梯将停止运行。 When the handrail is broken, the escalator will automatically stop the operation.
19. 围裙板刷 Skirt panel brush	在围裙板和梯级之间装有刷子使乘客的鞋子不会碰到围裙板(不仅限于自动扶梯)。 The brush that has been installed between the skirt panel and the step will prevent the passengers from touching the skirt panel. (It is not merely restricted to the escalator.)

选配功能

Optional Function

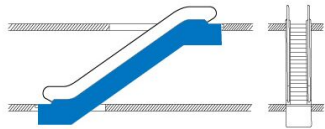
20. VVVF变频控制技术 VVVF variable frequency energy-saving system	选用频率变频器后, 能有效的降低能源消耗。 When chooses the frequency converter, it can effectively reduce the energy consumption.
21. 梳齿照明 Comb illumination	照明被安装在靠近梳齿板旁的围裙板上, 为梯级和梳齿板提供照明以便乘客安全的乘坐自动扶梯。 The illumination has been installed in the skirt panel near the comb plate. It offers the lighting for the step and the comb plate. It is more convenient for the passengers to up and down the escalator.
22. 扶手照明 Handrail illumination	扶手照明安装在扶手支架内, 柔和的光线为运行中的自动扶梯增添了几分灵气。 The handrail illumination has been installed in the handrail frame. The gentle light adds charm to the running escalator.
23. 自动启动/停止 Automatic start / stop	位于楼层板附近的红外线传感器可以检测到进入楼层板的乘客, 并自动开始运行, 当所有乘客离开后会自动停止运行, 以节约能耗。 The infrared ray sensor which is near the floor plate can detect the passenger that enter into the floor plate. Then it will automatically start the operation. After all the passengers leave, it will automatically stop the operation again in order to save the energy loss. Scanning sensor and traditional guide rod are available for your choice.



Philippines Exclusive Strategic Partner
and Service Provider:

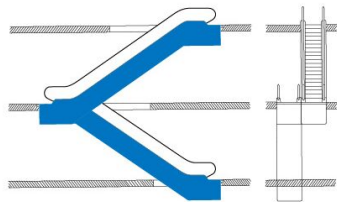
adm Vertical
Specialist, Inc.

Arrangement Plan



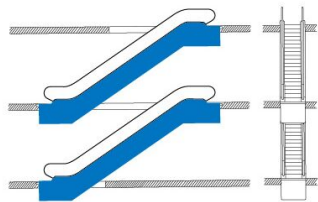
Single Unit

The Single unit used to link two levels. It is suitable for buildings with passenger traffic flowing mainly in one direction. Flexible adjustments to traffic flow (e.g., up in the morning and down in the evening) is possible.



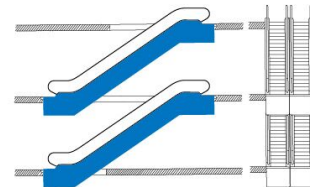
Continuous arrangement (one-way traffic)

This arrangement is used mainly in smaller department stores to link three sales level. It requires more space than



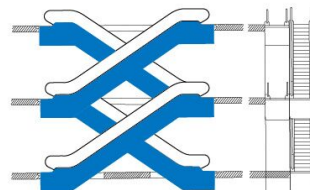
Interrupted arrangement (one-way traffic)

This arrangement is somewhat inconvenient for users, but advantageous for department store owners, since the short detour to the next unit and spatial separation between up and down travel is ideal customers past strategically placed advertising displays.



Parallel, Interrupted arrangement (two-way traffic)

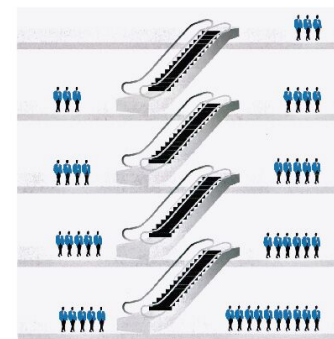
This arrangement is used mainly in department stores and public transport buildings with heavy traffic volume. When there are three or more escalators, it should be possible to reverse the traveling direction according to the traffic flow. This arrangement is economical, since no inner lateral claddings are required.



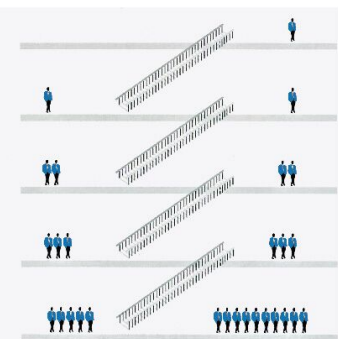
Crisscross, continuous arrangement (two-way traffic)

This arrangement is used mainly in major department stores, public buildings and public transport buildings where transport times between several levels should be kept to a minimum.

Escalators



Ordinary Staircase

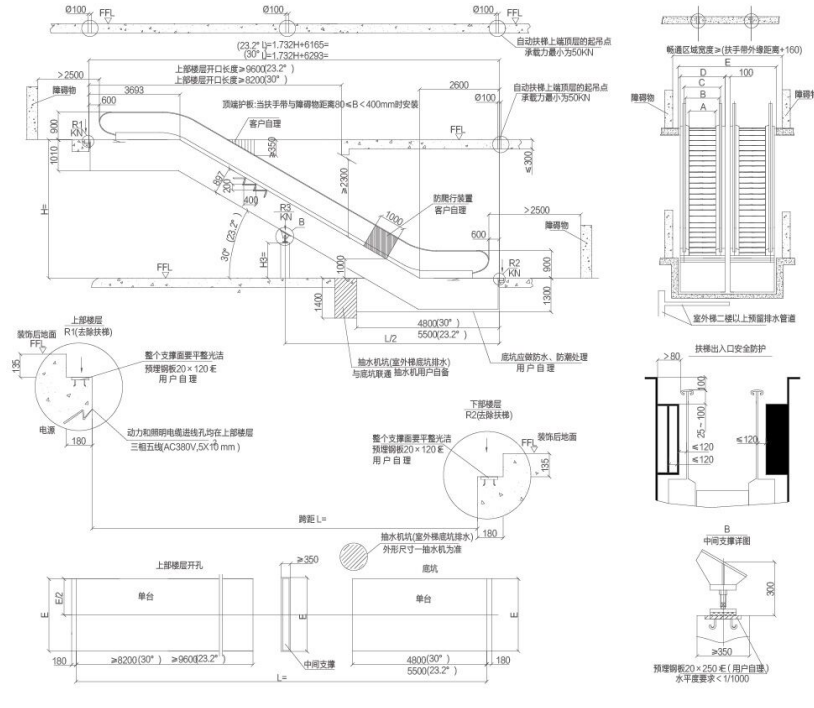


Philippines Exclusive Strategic Partner
and Service Provider:

adm Vertical
Specialist, Inc.



Outdoor bus type escalator Construction sketch (great height)



室外公交型扶梯（大高度）参数表

Outdoor bus type escalator (height) parameter table

型 号	提升高度	净重	电机	支持力 (KN)			说明						
	mm	KN	功率	R1	R2	R3							
VF800/0.5~30° (4800人/h) 速度: 0.5m/s	6000	182	11KW	2.1L+13	1.9L+17	5.2L+8.2	1. 当扶梯装于二楼以上时地坑取消, 土建下部结构与上部对应, 如有底坑, 应防水处理, 用户自理。 2. 自动扶梯上下出入口应有充分畅通区域, 其宽度至少等于扶手带中心线间距, 纵深尺寸从扶手带转向到前面障碍物不小于2500。 3. 自动扶梯扶手带到任何障碍物不小于80。 4. 电机AC380V/ 50Hz电机功率见表。 5. 由用户提供一台电机小尺寸做接地装置。 6. 由用户提供至扶梯主开关的电力电源线要求三相五线。 7. 所有尺寸单位用毫米, 如有变化另行通知。 8. 所有安全围栏的高度大于(扶手高度+100)。						
	6500	192											
	7000	200											
	7500	208	15KW										
VF1000/0.5~30° (6000人/h) 速度: 0.5m/s	6000	196	11KW	2.3L+14	2.3L+7.1	7.16L+5							
	6500	204											
	7000	212	15KW										
	7500	220											
中间支撑梁H3	(L/2-2600) × tg30° - (897/cos30° + 300)							1000	1000	1158	1238	1600	3400
								800	800	958	1038	1400	3000
							扶梯宽度	A	B	C	D	E	

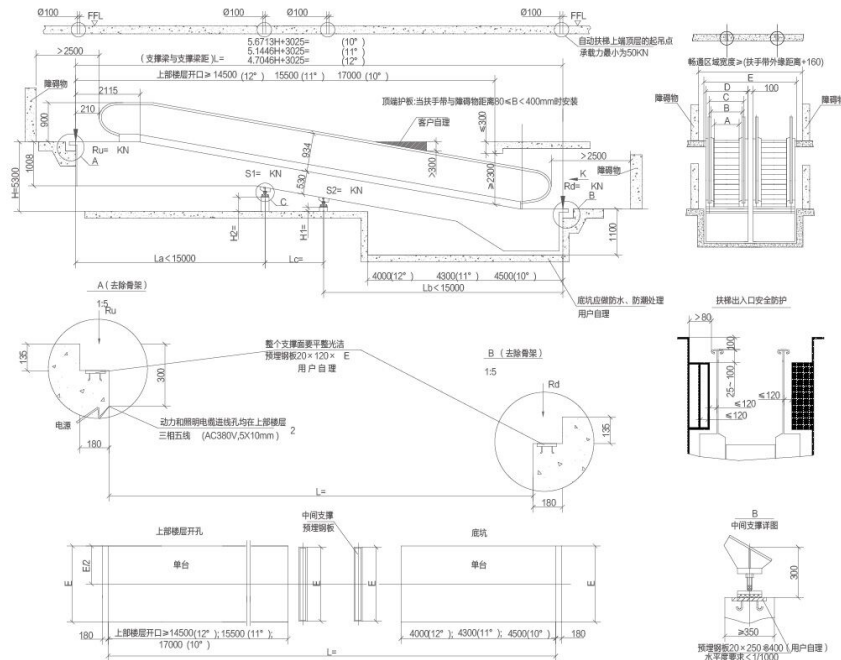


Philippines Exclusive Strategic Partner
and Service Provider:

adm Vertical
Specialist, Inc.

TR1000/0.5-10°/11°/12°

TR1000/0.5-10°/11°/12° construction sketch

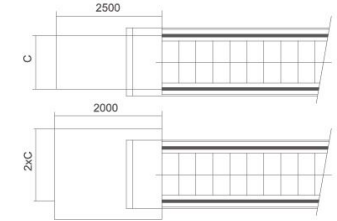


Installation notes

As Well as complying with the drawing of the contract, attention should also be drawn to the following

To ensure the safety of the escalator and moving walk, free space should large enough in the landing area. (See minimum size on ritgh)

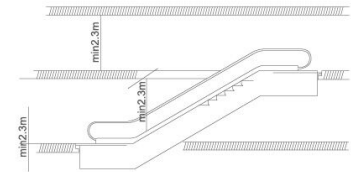
C = the distance of the handrails



Vertical safety distance

There should be at least 2.3m upside safety distance starting upward from the step board.

Notice: if the vertical rise of one escalator, which is installed above another one, less than 3.3m, the upside safety distance can not reach 2.3m.



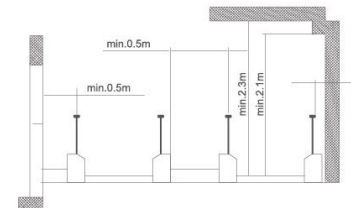
Escalators and movingwalk horizontal safety distance

The horizontal distance between the handrail edge and the wall or other objects should be more than 80mm.

The vertical distance above the step board should be more than 2.3m.

The vertical distance above the handrail space should be more than 2.1m.

In case of floor spaces or the cross layout of escalators and moving walk, the safety distance between the handrail center and the object should be more than 0.5m.



If the above-mentioned requirements cannot be met a special device and a bumper rail should be sued.

for further information please contact Adm Vertical specialists, Inc.

TR1000/0.5-10°/11°/12°参数表

TR1000/0.5-10°/11°/12° parameter table

1000		1000		1158		1238		1600		3400	
800		800		958		1038		1400		3000	
扶梯宽度		A		B		C		D		E	
提升高度		中间支撑		La(mm)		Lb(mm)		Lc(mm)			
从	至	S1	S2								
1601	2663										
2664	4151	1		L-7000		7000					
4152	5851	1		15000		L-15000					
5852	6000	1	1	15000		7000				L-22000	
A		H2				H1					
10°	H2=H-(La-1995) ×0.1763-840					H1=H2-(Lc×0.1763)					
11°	H2=H-(La-2055) ×0.1944-840					H1=H2-(Lc×0.1944)					
12°	H2=H-(La-2115) ×0.2126-840					H1=H2-(Lc×0.2126)					
梯级宽度 (mm)		提升高度 (mm)		速度 (m/s)		公称输送容量 (人/h)		倾斜度 (°)		曳引机功率 (kW)	
800		1000-3800		0.5		4800		10,11,12		7.5	
		3800-6000								11	
		1000-3000								7.5	
1000		3000-4800		0.5		6000		10,11,12		11	
		4800-6000								15	

说明

1. 当扶梯设于二楼以上时地坑取消, 土墙下部结构与上部对称, 如有地坑, 应防水处理, 用户自理。
2. 自动扶梯上下出入口应有充分畅通区域, 其宽度至少等于扶手带中心线间距, 级深尺寸从扶手带转向端到前面障碍物不小于2500。
3. 自动扶梯扶手带到任何障碍物不小于80。
4. 电机AC380V 50Hz电机功率见表。
5. 由用户提供一电阻小于4欧的接地装置。
6. 由用户提供至扶梯主开关的动力电源要求三相五线。
7. 所有尺寸单位用毫米, 如有变化不另行通知。
8. 所有安全围栏的高度大于(扶手高度+100)。



Philippines Exclusive Strategic Partner
and Service Provider:

adm Vertical
Specialist, Inc.

Five-heart concept



Reliable: the full-life-cycle service

GENERAL Elevator can provide the full-life-cycle that includes the design, production, installation, sale and after-sale service. Hence, the one-stop solution is quite reliable for our customers.



Reassuring: advanced internet of things

The advance internet of things has been introduced. By monitoring the elevator operation on a real-time basis, it can remove the fault in advance and thus avoid the accident. It can make you reassured.



Dedicated: excellent maintenance-repair team

Our maintenance-repair has received the strict training and thus acquired the professional skills and rich experience. The team can provide the safe and considerate service for our customers with dedication.



Considerate: 24-hour service hotline

The 24-hour service hotline has been offered. With the 365-day emergency disposal system, we can provide the professional, rapid and considerate services of consulting maintenance and repair for those customers all over.



Trustworthy: Huge service network

Through the huge service network in China, our professional team can provide the most professional service and support for those customers in all cities.